

Order Coleoptera, family Latridiidae

Description of a new species of *Corticaria* Marsham, 1802

Wolfgang H. Rucker

INTRODUCTION

In the first contribution on the family Latridiidae in the United Arab Arab Emirates, 8 species were recorded, of which 3 species are of the genus *Corticaria* Marsham, 1802 (Rucker, 2008). Here a new species of that genus is added, *Corticaria arenosa* nov. spec. Detailed morphological description of the new species and figures of its habitus and male genitalia are provided.

MATERIALS AND METHODS

All specimens were collected in light traps by A. van Harten. The holotype and part of the paratypes will be kept in the Rucker Collection, in future to be deposited in the Museum für Naturkunde, Stuttgart, Germany; the other paratypes will stay in the UAE Invertebrate Collection.

SYSTEMATIC ACCOUNT

Subfamily **Corticariinae** Curtis, 1829

Genus *Corticaria* Marsham, 1802

Corticaria arenosa Rucker nov. spec.

Figures 1–9

Specimens examined: Holotype: ♂, United Arab Emirates, Wadi Safad, 25°13'N 56°19'E, 20.xii.2005–2.i.2006, light trap, leg. A. van Harten. Paratypes: 83 ex., same data as holotype. 5 ex., Wadi Safad, 2–26.i.2006; 9 ex., 21.ii–4.iii.2006; 5 ex., 15–22.iv.2006. 1 ex., Fujairah, 13–29.xi.2005; 1 ex., 8.xii.2005–2.i.2006. 6 ex., Sharjah-Khor Kalba, near tunnel, 7–22.iii.2006, light trap; 3 ex., 7–14.vi.2006, light trap. Diagnosis: A large species of *Corticaria* with conspicuously wide body shape. Body length 1.85–2.00 mm, body flat and only moderately arched. Pronotum wide and transverse, with lateral sides evenly rounded and with strong teeth. The whole beetle (Figs 1–2), including legs and antennae, of a yellowish-brown colouration, with uniformly long, oblique, yellow hairs. No visual sexual dimorphism.

Description (holotype): Head. Width 0.43 mm, length 0.16 mm; ratio width:length = 1:0.37. Eyes coarsely faceted, arched, black; diameter of eyes 0.13 mm. Temples barely discernible, corresponding to only $\frac{3}{4}$ of a row of facets; with widely-spaced fine punctation and with fine microsculpture between the punctures. Antenna as in Figures 3 and 6. Length 0.54 mm, with eleven antennomeres and a three-segmented club (Fig. 2); antennomeres I and II thick, longer than broad, antennomeres III and IV 1.5× longer than broad, antennomeres V and VI about 1.25× longer than broad, antennomeres VII and VIII as long as broad, antennomeres IX and X broader than long, antennomere XI as broad as long.

Pronotum. Width 0.614 mm, length 0.487 mm; ratio width/length 1: 0.79; lateral margin with 9–10 very strong teeth, resembling a saw; laterally somewhat flattened; the disc to some extent arched, in front of its base with an very faintly pronounced depression, no foveola;

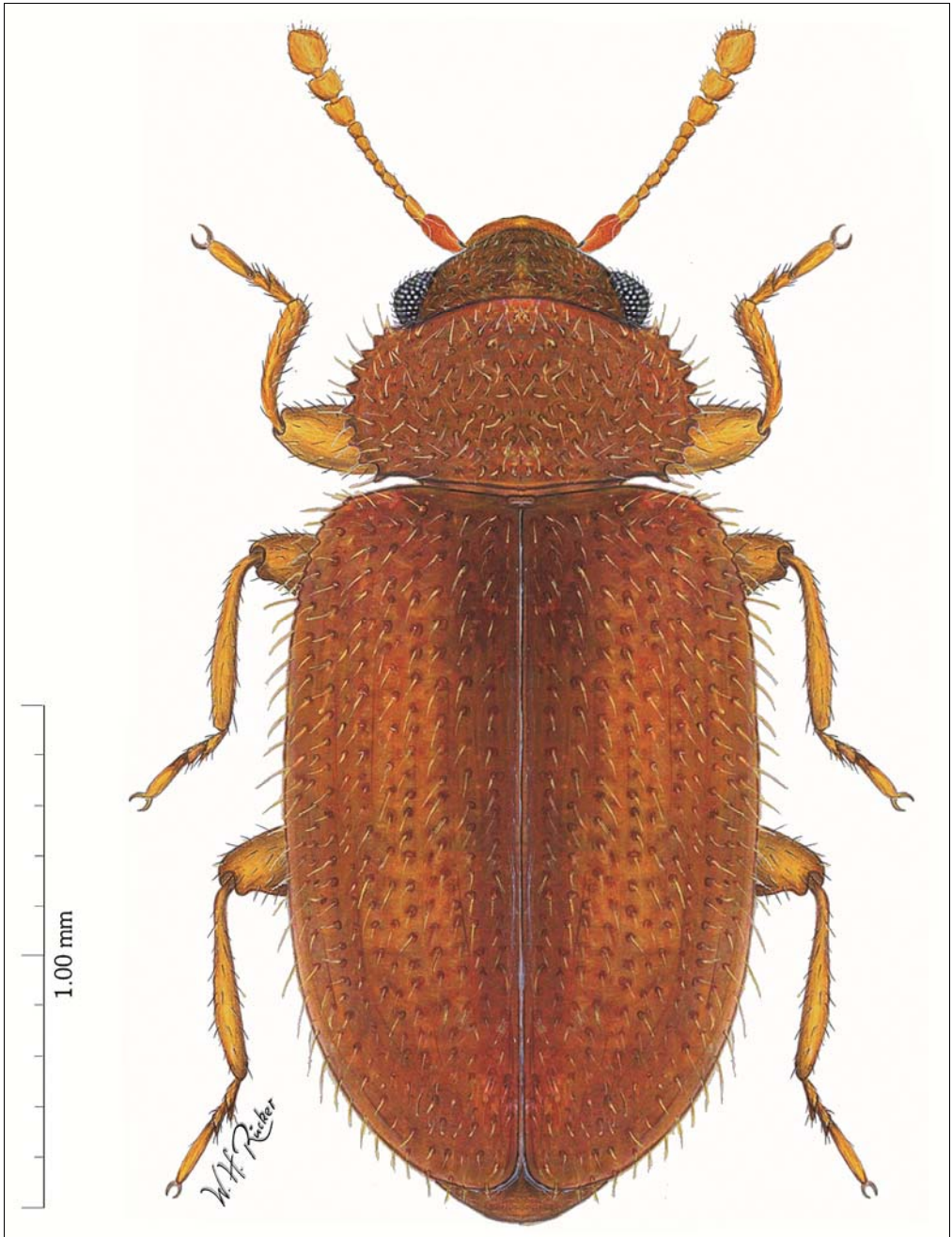
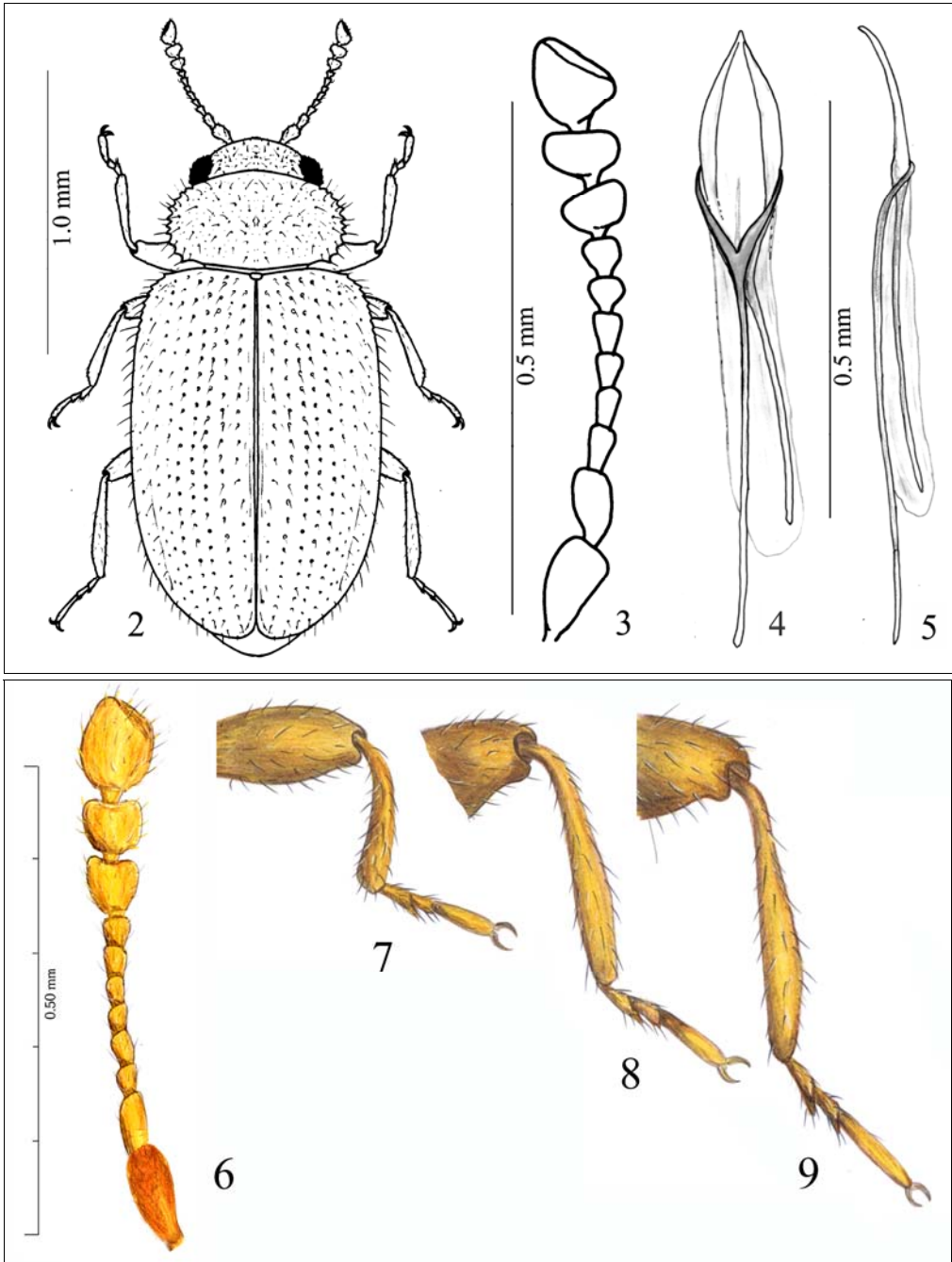


Figure 1. *Corticaria arenosa* nov. spec., paratype, habitus.



Figures 2–9. *Corticaria arenosa* nov. spec. 2: Habitus; 3, 6: Antenna; 4: Aedeagus ventral; 5: Aedeagus lateral; 7: Fore leg; 8: Middle leg; 9: Hind leg.

pubescence long, somewhat oblique, 0.072 mm in length; each tooth with a hair of same length; punctures small and widely-spaced, between the punctures with fine micro-sculpture. Elytra. Width 0.73 mm, length 1.24 mm; ratio width/length 1:1.67, margins parallel-sided; shoulders only weakly pronounced; lateral margins at shoulders with small teeth; each elytron with 8 rows of fine, shallow punctures; number of punctures in each row 28–30; intermediate spaces flat, somewhat shiny, sometimes with isolated small points; pubescence somewhat oblique, long (0.070–0.075 mm), of golden-yellowish colour; distal corners rounded at suture. Legs. Simple, same in male and in female, without teeth or visible spines (Figs 7–9).

Ventral view. Abdomen with short pubescence, without visible punctation.

Aedeagus. Flat in lateral view (Fig. 5), in ventral view symmetrically widening, apex fine and pointed (Fig. 4), total length 0.714 mm; clasps narrow and fine, length about 0.500 mm.

Differential diagnosis: *Corticaria arenosa* nov. spec. can be differentiated from all other species of *Corticaria* by the conspicuous wide shape of the elytra, and, especially, by the wide pronotum. In most *Corticaria* species the pronotum is more or less heart-shaped, with a foveola at its base; the elytra are slender and more arched.

Derivatio nominis: The name of the new species comes from Latin, *arenosa* = rich in sand, indicating that the species lives in an environment with plenty of sand.

ACKNOWLEDGEMENTS

I thank Antonius van Harten for the translation of this chapter, for the production of photographs of the new species used for the preparation of the colour drawing and for the examination of the manuscript.

REFERENCES

- Rucker, W.H. (2008): Order Coleoptera, family Latridiidae. *Arthropod fauna of the UAE*, 1: 240–253.

Author's address:

W.H. Rucker, Von-Ebner-Eschenbach-Strasse 12, D-56567 Neuwied, Germany; e-mail: coleoptera@latridiidae.de